



RUAWAI COLLEGE NEWS

Term 1 Week 10

Thursday 6 April

Upcoming Events

Monday 24 April

NCEA Accord Day
(Staff only Day)

Tuesday 25 April

ANZAC Day - School Closed

Wednesday 26 April

School Starts

Thursday 28 April

Senior Boys Kiwitag

Saturday 29 April

Northern Wairoa Junior
Netball Starts

Monday 1 May

Hearing Conversation
Gateway Course
Community Basketball Starts

Tuesday 2 May

Hazard & Risk Gateway
Course

Wednesday 3 May

Mid-Week Football Starts
Term 1 Celebration Assembly

Thursday 11 May

PPTA Strike Day

Ruawai
COLLEGE
Respect
Resilience
Responsibility

*Tena Koutou te Whanau o Te Kura o Ruawai
Greetings to the families of Ruawai College*

PRINCIPAL'S KORERO

Mrs Raeleen Harre

This newsletter is a roundup of all the exciting, interesting and fun things that have happened here at Ruawai College across the term.

We have a very rich and proud history of academic and co curricular success. There are a wealth of opportunities in and beyond the classroom for our students to participate in and excel at. They are encouraged to make the most of the many varied opportunities that are available here. One of the greatest strengths of the school is the caring, friendly, family environment that we have. In all areas of endeavour and conduct expectations are high, achievement is celebrated and strong relationships are forged.

We encourage all whanau to keep in contact with the school during the year and only together can we work towards successfully raising student achievement, instilling our core values of respect, resilience and responsibility and providing an environment that is safe and enriching. It has been wonderful to welcome many new families into the Ruawai College whanau.

We are very pleased that the Ministry of Education in Tai Tokerau is funding a programme which we are calling the Tautoko Project. Primarily it is aimed at students who -

- may be struggling with regular attendance to school
- are having difficulty following the kaupapa of the school

Mrs. Kimberley Rope-Battcher is leading the programme and it involves guidance, well-being support, environmental awareness, physical challenges, mau rakau, and whakairo.

If you have any questions please feel free to contact Kimberley at krpe@ruawaicollege.school.nz

Local School Principal and Prefect Hui

During the term we had a visit from the Principals and Head/Deputy prefects of Dargaville High School, Otamatea High School and Rodney College. The hui is a collaboration of our local schools' net working,



sharing information, exchanging ideas and forming closer ties and relationships with our neighbouring schools. The yearly quadrangle sports tournament between the 4 schools is an example of this collaboration.

Keep in Touch

Ruawai College Website: www.ruawaicollege.school.nz

Phone: 09 439 2216

Follow us on Facebook www.facebook.com/ruawaicollege

TOP FORM



First Place
TOTARA

Second Place
RIMU

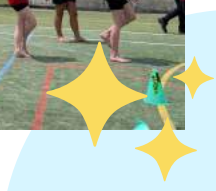
Third Place
KAURI



First LA
T3

Second LA
R1

Third LA
T1





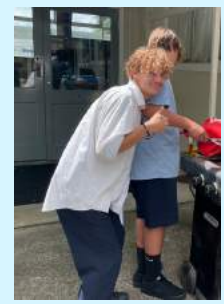
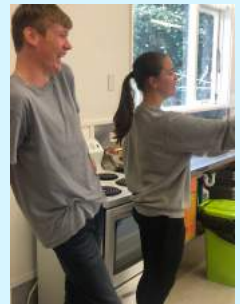
PEER SUPPORT

Peer support is a personal development programme for secondary students, its purpose is twofold. Firstly it is to support and nurture young leaders and equip them with the skills and knowledge to take on roles of responsibility within their school. Furthermore, this is an opportunity for our students to demonstrate leadership through service by supporting others around them.

For students starting their new learning journey in an unfamiliar setting, this transition period can be overwhelming and at times daunting. Having senior students support them with this change can assist by

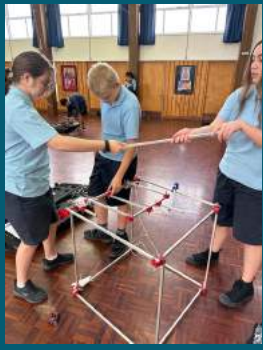
- Raising self-esteem and confidence of new students
- Helping new students develop the skills, knowledge and confidence to interact in positive ways;
- Build a network of personal support for new students in their school.

This year the Year 13 students and Year 12 prefects gathered to lay the groundwork in delivering the Peer Support programme at Ruawai College. They were there to walk alongside our junior students and help them to settle into our Ruawai College Whanau



Epro8

We were involved in the EPro8 Challenge competition again this year for the third time in a row. We ran our In School EPro8 challenge event and then we selected the top two teams who went on to compete in the inter school competition at Whangarei. The highlights of the event were students participating in a highly engaged environment with a lot of fun activities where they get to build maths, science and engineering challenges. They have to use critical thinking, literacy and numeracy, maths and science skills to build structures provided as challenges. Congratulations to all participants in this year's EPro8 Challenge event.



RUAWAI COLLEGE MUSIC LESSONS



MUSIC LESSONS AVAILABLE FOR 2023:

- BEGINNER GUITAR
- DRUMS
- VOCALS

REGISTER YOUR INTEREST WITH DEBORAH STEELE
DSTEELE@RUAWAICOLLEGE.SCHOOL.NZ

E nga mana, e nga reo, e nga rau rangatira ma,
Tenei he mihi atu ki a koutou katoa mo te tau hou
Tena koutou, tena koutou, tena koutou katoa.

POWHIRI



The first official school engagement this year was our school powhiri for new students and families to the college. We welcomed warmly into our school the new Assistant Principal Mrs Karen Exley along with an all time favourite ex-student Pita Pua who became the schools newest teacher Aide. An informal powhiri was led by our senior school Kaikaranga Freedom Anihana-Dunn. Nau mai haere mai whakatau mai ra ki te Kura Tuarua o Ruawai - Come one, come all, come be a part of Ruawai College.

PROFILE REPORTING



Te Ara Huarau is the evaluation approach that the Education Review Office (ERO) is using in our school. This is a developmental approach to evaluation where ERO and our school work together over time rather than one off reviews that happened previously. Te Ara Huarau is used in most English-medium state and state-integrated schools.

ERO maintains a regular review programme to evaluate and report on the education and care of young people in the schools. Our school worked alongside ERO to write our Profile Report. This type of report will only happen once as part of our initial engagement with Te Ara Huarau. The profile report reflects our strategic goals and a shared evaluation focus on one or more areas that are important to us as we work together to improve outcomes for all our learners. ERO, like us, have a strong focus on equity and excellence. Future reporting will show our progress and achievement towards meeting the goals we have set. Public reports like the Profile Report are published on ERO's website.

Within a three year cycle all schools will then have a Te Ara Haurau School Evaluation report. The School is now working with ERO on this next stage. This report includes information about the school's improvement journey, what the school has achieved for learners and their future priorities.

A Board Assurance Report that shows how we are meeting regulatory and legislative Requirements has also been published. Please follow the link to the public report - <https://ero.govt.nz/search?keywords=ruawai+college>

Northland Field Days



This year Ruawai College worked at the Northland Field Days with Sustainable Kaipara and Kaipara Refuse. We were even given the title of Waste Ambassadors. The mission was to educate the public to reduce the amount of recyclable material and food waste in our landfills. The students were out for the event's three days.

They were set up at the three food courts around the site with their hi-vis vests, sunhats, and positive manner. The students were encouraged to help people sort their rubbish into the correct containers and to explain the different reasons for their recycling being unable to be used. For instance, did you know that the coffee cups that have the term biodegradable can't be composted? They can, however, go into landfill where they break down or degrade. If your food containers are dirty with leftover food, they can't be recycled because they're contaminated! There are a lot of factors that go into recycling, so it turned out to be an educational experience for all. The students were absolutely amazing. It was so hot and sunny, but they just kept smiling and being respectful to everyone they interacted with. Thanks to each and every one of you. - Kimberley Rope Battcher, Senior Leader



Ruawai College students ran, threw and jumped their way through an exciting athletics day. The day began with the hotly contested 100m sprint heats. Bedecked in red, green and blue, everyone passionately cheered on their house's runners.

Athletics

The day continued with various events taking place for each age group, such as discus, shot put, long jump and 800m. House points were awarded for the top placing students. To finish the day, the teachers challenged the houses in the all star relay. Kauri made a valiant effort, coming a close second behind the teachers. Rimu and Totara followed closely behind. Ultimately, Totara was the top house with Kauri second and Rimu third. Overall 2023 athletics was a success and Ruawai College looks forward to next year's event.



Athletics Champions



Sub-Junior Girls

Jayde Te Rore Kapa

Sub-Junior Boys

Reuben McLaren

Junior Girls

Tarshyah Walters

Junior Boys

JZ Llewellyn/Matthew Watkins

Intermediate Girls

Manea Natiso

Intermediate Boys

Rawiri Mcllroy

Senior Girls

Piper Sterling

Senior Boys

Quinn Gardiner

Records

Turbow Throw SJB

Nayte Johnston 24.80m
(B Crosbie 24.00m 2009)

1500m SB

Ben Watkins 4.50.96
(P Rule 4.54.26 1988)

High Jump JG

Tarshyah Walters 1.42m
(A Radich 1.38m 2015)



Ruawai College held its annual swimming sports. The students showed great spirit, challenging each other with house chants, positive competition in house relays and supporting each other throughout the day. Congratulations to our champions who swam outstandingly and set such a high standard of swimming. It is great to see students challenging records, and a number were once again broken, one of these dating back to 1975.

SWIMMING SPORTS

Congratulations to the overall house winner, Totara, Rimu a close second and Kauri in 3rd place. A huge thank you to the staff and whanau involved with timekeeping, recording and all other jobs involved, in getting this event up and running. A massive thanks also to all the whanau that came and supported our students, it was awesome to see such spirit.



Champions



Sub-Junior Girls

Ashlee Fraser

Sub-Junior Boys

Nate Watkins

Junior Girls

Kourtney Hawkes/
Chillie Te rore

Junior Boys

Bronson Wrathall

Intermediate Girls

N/A

Intermediate Boys

Zach Sterling

Senior Girls

Piper Sterling

Senior Boys

Ben Watkins



Records

Zach Sterling IB

- 50m Freestyle - 30.31
(Taylor Blythen 31.22 2013)
- 100m Freestyle - 1.09.45
(Ben Watkins 1.10.00 2022)

Ben Watkins SB

- 100m Breaststroke - 1.33.74
(D Marinkovichn 1.36.90 1998)
- 100m Backstroke - 1.25.83
(H Connett 1.26.97 2019)

Piper Sterling SG

- 25m Breaststroke - 19.84
(C Phillips 19.98 1994)
- 50m Breaststroke - 43.12
(E Spoelstra 44.06 2015)
- 50m Freestyle - 31.68
(S Murphy 32.60 1975)
- 25m butterfly - 15.40
(Piper Sterling 16.00 2022)

LEADERSHIP

The student leadership training day was organised for all Prefects and House leaders. Fifteen students attended this day. Mrs Sandhu organised the day and ran the initial session with her keynote speech highlighting the points such as leadership, expectations of student leadership at Ruawai College, and giving an opportunity for the students to decide their portfolios for the year.

Jacqueline Knight from the Enviro schools ran a session to share her knowledge around our three house trees Kauri, Rimu, and Totara - what are the uses and their place in Maori legends. She also shared how to look after these native trees, especially when our Year 13 leavers receive a tree during the senior prizegiving.

Mrs Exley, Assistant Principal, organised a team building activity for all the student leaders. This was followed by a session with Sports Northland and the theme of activities running during the session resonated around our school values of Respect, Responsibility, and Resilience. After the lunch session student leaders practised Waiata and Kapa Haka for the Powhiri.

The feedback for the day from all participating students has been very encouraging.

Hands-On At Otago

Emma Philips was also successful in being awarded a scholarship by Otago University to attend the "Hands-On at Otago" programme over the holidays. To read more about this programme, follow this link. See Emma's korero below.

On my visit to Hands-On at Otago, I chose to attend the physics and applied mathematics projects. This trip included more damaged labs, with a nitrogen-filled bottle exploding and breaking all the glass in a clock. As exciting as that was, the real highlight for me was a lecture on black holes. Learning about the work theoretical physicists do to understand something light-years away that they will never see or touch was interesting. This camp inspired me to consider the path of quantum or astrophysics as a future career.

At this camp, I also participated in science communication sessions where I made a short five-minute podcast with OAR FM. To finish off, we went on a cruise around the harbour where we were lucky enough to see Hector's dolphins. Thank you to Mrs Sandhu especially for encouraging me to apply for these opportunities.

Smart Alex Creative Writing Competition

Over the Christmas period, Year 13 student and Ruawai College Head Prefect Emma Philips was awarded first place in the senior category of The Friends of the Turnbull Library Smart Alex 2022 - a creative writing competition for secondary school students.

The Smart Alex competition was created by the library to honour its founder, Alexander Horsburgh Turnbull, to commemorate and celebrate over 100 years since the Alexander Turnbull Library opened in June 1920. Alexander Turnbull was an amazing collector of art, artefacts, clothes, coins, maps, photographs and books - especially books about New Zealand and the Pacific. When he died, Alexander Turnbull gifted his collection (including 55,000 books) to New Zealand. That gift became the basis for New Zealand's largest documentary heritage library.

Emma's story was inspired by a 1950 photography from the Evening Post collection, about the murder of a night watchman at Wellington Railway Station. The judge remarked Emma's story to be a clever tale about a "kiwi Sherlock Holmes knock-off" - amusing, well-constructed, with good dialogue. Emma was awarded \$800.00, as well as a \$150.00 book token for the school.

Congratulations Emma on your amazing achievement - well done!

Link to Emma's story can be found at <https://natlib.govt.nz/records/23032817>



NW SWIMMING

A group of five Year 7 & 8 students went to the Kauri Coast Community Swimming Pool to compete in the Northern Wairoa Primary School Swimming. What an awesome day had by all.



HOCKEY 5'S

A group of 6 Year 9 and 10 Boys travelled over to Whangarei to compete in a 5 a side Hockey tournament.



Upcoming Sports

Saturday 29 April
Northern Wairoa Junior
Netball Starts

Wednesday 3 May
Mid-week football Starts

Friday 19 May
Cross Country

Thursday 25 May
Senior Mixed Volleyball

Thursday 8 June
3x3 Basketball Year 9 & 10
Mixed Girls/Boys

Tuesday 13 June
3x3 Basketball Seniors

Tuesday 27 June
NSS Cross Country

Surfing

The Year 11 cohort attended a Surf trip to Sandy Bay, Tutukaka, as one of their shared learning experiences. They were provided with full equipment and instruction from Surf Tutukaka. The students were given information about the surfboards, how to use them safely, both in and out of the water and the safety instructions for when they were surfing.

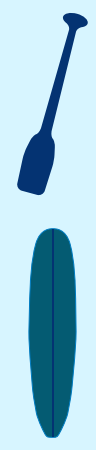
They started with a dry land demonstration of how to get up and stand on the board before applying and practicing these in the water. Some of the students were a bit apprehensive at the start, but as they became more confident they began to achieve their goal of standing and riding the waves. There was lots of laughter and enjoyment as the day progressed, with the students demonstrating all our school values, Respect, Responsibility and lots of Resilience. All the students were able to use this experience towards their subjects for Physical Education, Science, Art and Digi tech.





Lakes

The Year 11 cohort attended their second shared learning experience at one of our many beautiful local environments, Kai Iwi Lakes. They had the opportunity to have a go at paddleboarding and kayaking. For some students these were new experiences and a chance to learn new skills, while for others it was to enhance and practice what they already knew. It was a beautiful day with no wind on the lake, allowing students to fully participate and enjoy the scenery while also having fun. Thanks to Mahana Paddleboards for the equipment and instruction. Students also used this experience to gather knowledge for Science assessments as well as supporting Physical Education assessment tasks.



SENIOR TOUCH

Helena took a group of senior boys and girls to Kaikohe for a touch tournament. Students played well and won 2 out of 4 games.



NSS ATHLETICS

A group of 14 students went over to Whangarei to compete in the Northland Secondary School's Athletics. We came away with 5 first's and a number of second's and third's. I was so proud of our school and it was a great day had by all.



NSS SWIMMING

A group of 6 students competed in the Northland Secondary Schools Swimming competition.





LEARNING AREA

At Ruawai College, Technology is taught through the subjects Digital Technology, Hard Materials Technology and Food and Fabric Technology (which also incorporates Home Economics/Hospitality from the Health Curriculum) All of these subjects are taught from Year 7 to 13.

Technology

In Term 1 of 2023 the Year 7 Students have participated in Fabric Technology and Food and Nutrition and the Year 8 Students in Hard Materials Technology. Senior classes have started in all three subject areas.

Junior Modules have enabled the technology department to think outside the square and incorporate some new learning.

We are looking forward to the modules being taught In the upcoming of terms:

- Lego Masters - using design skills to create Lego projects
- From Pong to GameFroot - using coding to create a variety of games
- Cultural Food Truck - making healthy food products suitable for a food cart from around the world
- Off to the Markets - making and marketing products from different Technology areas
- Time to get creative - making a wooden clock
- Kit set creations - Using kit sets to create something and then creating their own kits



Bus Safety



Reminder

Please make sure your contact details are up to date.

3:00pm - 3:15 In response to a rising volume of traffic, both vehicle and human, the college has actioned procedures in how students and pedestrians manage themselves at this time of the day.

At 3:00pm, our first 3 buses line up outside the school in the same order each day: Dargaville, Parahi, Okahu. Students who are travelling on the remaining buses: Tinopai, Te Kowhai, Toka Toka wait in a designated area outside H-block, with the bus duty teacher.

Any student who needs to cross over the state highway to the parking/pickup area must wait in the designated area. Once the last 3 buses have parked safely the bus Duty Teacher brings the remaining students to the bus bay. Bus students make their way to their respective bus, and all other students are crossed safely by the bus duty teacher.

If parents are picking up their child after school, please be aware that there is a wait time of about 5-7 minutes before students are crossed over the road to the parking area. We respectfully request that any adults at the college at this time also wait and cross with the students, as this reduces the amount of foot traffic crossing the road and allows a better flow of vehicle traffic.



Tree Climbing

The Year 11 cohort participated in the shared experience of Tree Climbing at Adventure Forest in Glenburvie. They experienced many challenges and pushed themselves both mentally and physically to complete the various courses. The students showed courage and resilience throughout the day, with a few attempting one of the more difficult courses.

The excitement and squeals were heard as they zip lined throughout the trees, or were met with some form of challenging task, like riding a bike along a bridge or climbing through a rope spider web. Problem solving skills were highlighted as they figured out the best way to achieve the course in front of them. This was a great day, with many smiles and very sore hands by the end of it all.



Polyfest

The Level 3 Geography students travelled to Auckland to visit the ASB Polyfest event. Polyfest is one of the biggest Pasifika festivals in New Zealand, with many Auckland schools performing.

Our trip mainly focused on gathering evidence of the planning and implementation of the event, but we got to enjoy some awesome performances at the Diversity stage, including African fusion, Indian, Thai, Nepalese and Filipino dances. We also made sure we sampled the wide variety of pasifika food on offer. Thanks to Miss Ripikoi for accompanying us on this trip.

Deborah Steele (Geography Teacher)



Board of Trustees Meeting Dates

Tuesday 4 April

Tuesday 23 May

Tuesday 27 June

Tuesday 22 August

Tuesday 19 September

Tuesday 7 November

Tuesday 5 December

Board Comment

We welcome Emma Philips on to the Board as Student representative. Emma will attend her first board meeting of the board on Tuesday 4 April.

SKOOL LOOP APP

Ruawai College has an app. This app is available on both apple and android devices and can be downloaded from the app store or google play.

This app allows users to get important notices via notifications on their device, whilst also being able to see events on the school calendar. It gives the user the ability to see newsletters and email student absences. Download and try it today.



Ruawai College BYOD Specifications

Ruawai College believes that the use of devices in class will supplement and enhance the learning of our students. By being a BYOD school, we are promoting co-operative, inquiry based learning and a partnership between home and school.

Year 7 - 13 BYOD Specifications Either:

- Laptop / Notebook (with keyboard and full operation system, 10" - 15" screen)
- Chromebook (Running Chrome OS) Minimum Specifications:
- Wifi Capability
- A processing capacity that enables creation and manipulation of text and data
- A 10 inch (diagonal) screen (minimum)
- A keyboard
- Battery 6+ hours
- Lightweight and portable
- Durable



Health Forms, EOTC Contracts and Bus Contracts

Parents/Caregivers please remember to return any outstanding student Health Forms, EOTC contracts and bus contracts by the end of Term 1. Just a reminder that when these forms are returned, whanau will no longer need to fill these forms out for each trip their child attends. Please ensure that you notify the school of any 'health' changes.